



DEPARTMENT OF THE ARMY
U.S. ARMY CORPS OF ENGINEERS, ST. PAUL DISTRICT
ST. PAUL DISTRICT OFFICE
332 MINNESOTA STREET SUITE E1500
ST. PAUL, MINNESOTA 55101

MVP

April 10, 2025

MEMORANDUM FOR RECORD

SUBJECT: US Army Corps of Engineers (Corps) Approved Jurisdictional Determination in accordance with the "Revised Definition of 'Waters of the United States'"; (88 FR 3004 (January 18, 2023) as amended by the "Revised Definition of 'Waters of the United States'; Conforming" (8 September 2023),¹ MVP-2023-00845-JLK [MFR 1 of 1]²

BACKGROUND. An Approved Jurisdictional Determination (AJD) is a Corps document stating the presence or absence of waters of the United States on a parcel or a written statement and map identifying the limits of waters of the United States on a parcel. AJDs are clearly designated appealable actions and will include a basis of JD with the document.³ AJDs are case-specific and are typically made in response to a request. AJDs are valid for a period of five years unless new information warrants revision of the determination before the expiration date or a District Engineer has identified, after public notice and comment, that specific geographic areas with rapidly changing environmental conditions merit re-verification on a more frequent basis.⁴

On January 18, 2023, the Environmental Protection Agency (EPA) and the Department of the Army ("the agencies") published the "Revised Definition of 'Waters of the United States,'" 88 FR 3004 (January 18, 2023) ("2023 Rule"). On September 8, 2023, the agencies published the "Revised Definition of 'Waters of the United States'; Conforming", which amended the 2023 Rule to conform to the 2023 Supreme Court decision in *Sackett v. EPA*, 598 U.S., 143 S. Ct. 1322 (2023) ("*Sackett*").

This Memorandum for Record (MFR) constitutes the basis of jurisdiction for a Corps AJD as defined in 33 CFR §331.2. For the purposes of this AJD, we have relied on Section 10 of the Rivers and Harbors Act of 1899 (RHA),⁵ the 2023 Rule as amended,

¹ While the Revised Definition of "Waters of the United States"; Conforming had no effect on some categories of waters covered under the CWA, and no effect on any waters covered under RHA, all categories are included in this Memorandum for Record for efficiency.

² When documenting aquatic resources within the review area that are jurisdictional under the Clean Water Act (CWA), use an additional MFR and group the aquatic resources on each MFR based on the TNW, the territorial seas, or interstate water that they are connected to. Be sure to provide an identifier to indicate when there are multiple MFRs associated with a single AJD request (i.e., number them 1, 2, 3, etc.).

³ 33 CFR 331.2.

⁴ Regulatory Guidance Letter 05-02.

⁵ USACE has authority under both Section 9 and Section 10 of the Rivers and Harbors Act of 1899 but for convenience, in this MFR, jurisdiction under RHA will be referred to as Section 10.

MVP

SUBJECT: 2023 Rule, as amended, Approved Jurisdictional Determination in Light of *Sackett v. EPA*, 143 S. Ct. 1322 (2023), MVP-2023-00845-JLK

as well as other applicable guidance, relevant case law, and longstanding practice in evaluating jurisdiction.

1. SUMMARY OF CONCLUSIONS.

- a. Provide a list of each individual feature within the review area and the jurisdictional status of each one (i.e., identify whether each feature is/is not a water of the United States and/or a navigable water of the United States).

Name of Aquatic Resource	JD or Non-JD	Section 404/Section 10
Wetland 1(B)	Non-Jurisdictional	None
Wetland 2(B)	Non-Jurisdictional	None
Wetland 1	Non-Jurisdictional	None
Wetland 2	Non-Jurisdictional	None
Wetland 3	Non-Jurisdictional	None
Wetland 4	Non-Jurisdictional	None
Wetland 5	Non-Jurisdictional	None
Wetland 6	Non-Jurisdictional	None
Pond	Non-Jurisdictional	None

2. REFERENCES.

- a. "Revised Definition of 'Waters of the United States,'" 88 FR 3004 (January 18, 2023) ("2023 Rule")
- b. "Revised Definition of 'Waters of the United States'; Conforming" 88 FR 61964 (September 8, 2023))
- c. *Sackett v. EPA*, 598 U.S. 651, 143 S. Ct. 1322 (2023)

3. REVIEW AREA.

- a. Project Area Size (in acres): 15.92
- b. Location Description: The project/review area is located in Section 34, Township 22N, Range 19E, Brown County, Wisconsin.
- c. Center Coordinates of the Project Site (in decimal degrees)
Latitude: 44.329970 Longitude: -88.190150
- d. Nearest City or Town: Wrightstown

MVP

SUBJECT: 2023 Rule, as amended, Approved Jurisdictional Determination in Light of *Sackett v. EPA*, 143 S. Ct. 1322 (2023), MVP-2023-00845-JLK

- e. County: Brown
 - f. State: Wisconsin
 - g. Other associated Jurisdictional Determinations (including outcomes):
- 4. NEAREST TRADITIONAL NAVIGABLE WATER (TNW), THE TERRITORIAL SEAS, OR INTERSTATE WATER TO WHICH THE AQUATIC RESOURCE IS CONNECTED. NA
 - 5. FLOWPATH FROM THE SUBJECT AQUATIC RESOURCES TO A TNW, THE TERRITORIAL SEAS, OR INTERSTATE WATER. NA
 - 6. SECTION 10 JURISDICTIONAL WATERS⁶: Describe aquatic resources or other features within the review area determined to be jurisdictional in accordance with Section 10 of the Rivers and Harbors Act of 1899. Include the size of each aquatic resource or other feature within the review area and how it was determined to be jurisdictional in accordance with Section 10.⁷ N/A
 - 7. SECTION 404 JURISDICTIONAL WATERS: Describe the aquatic resources within the review area that were found to meet the definition of waters of the United States in accordance with the 2023 Rule as amended, consistent with the Supreme Court's decision in *Sackett*. List each aquatic resource separately, by name, consistent with the naming convention used in section 1, above. Include a rationale for each aquatic resource, supporting that the aquatic resource meets the relevant category of "waters of the United States" in the 2023 Rule as amended. The rationale should also include a written description of, or reference to a map in the administrative record that shows, the lateral limits of jurisdiction for each aquatic resource, including how that limit was determined, and incorporate relevant references used. Include the size of each aquatic resource in acres or linear feet and attach and reference related figures as needed. NA
 - a. Traditional Navigable Waters (TNWs) (a)(1)(i): N/A
 - b. The Territorial Seas (a)(1)(ii): N/A

⁶ 33 CFR 329.9(a) A waterbody which was navigable in its natural or improved state, or which was susceptible of reasonable improvement (as discussed in § 329.8(b) of this part) retains its character as "navigable in law" even though it is not presently used for commerce, or is presently incapable of such use because of changed conditions or the presence of obstructions.

⁷ This MFR is not to be used to make a report of findings to support a determination that the water is a navigable water of the United States. The district must follow the procedures outlined in 33 CFR part 329.14 to make a determination that water is a navigable water of the United States subject to Section 10 of the RHA.

MVP

SUBJECT: 2023 Rule, as amended, Approved Jurisdictional Determination in Light of *Sackett v. EPA*, 143 S. Ct. 1322 (2023), MVP-2023-00845-JLK

c. Interstate Waters (a)(1)(iii): N/A

d. Impoundments (a)(2): N/A

e. Tributaries (a)(3): N/A

f. Adjacent Wetlands (a)(4): N/A

g. Additional Waters (a)(5): N/A

8. NON-JURISDICTIONAL AQUATIC RESOURCES AND FEATURES

- a. Describe aquatic resources and other features within the review area identified in the 2023 Rule as amended as not “waters of the United States” even where they otherwise meet the terms of paragraphs (a)(2) through (5). Include the type of excluded aquatic resource or feature, the size of the aquatic resource or feature within the review area and describe how it was determined to meet one of the exclusions listed in 33 CFR 328.3(b).⁸

Wetland 1(B) is a linear feature that runs west to southeast along the northern boundary of Parcels VW-W180-1 and VW-W180-2. Wetlands 1, 2, 3, 4, 5, and 6 are long, linear features running along the boundaries of Parcels VW-W180-3 and VW-W180-4. All mentioned features are associated with existing residential development, commercial development, and an agricultural field in the immediately surrounding upland areas. Review of historical aerial photos show Wetland 1(B) was constructed sometime before 2000 along with the residential development to the north to provide drainage. Historical aerial photos also show Wetlands 1-6 were also constructed sometime before 2000 along with the residential development to the north/south to provide drainage. Further review of historical aerial photos demonstrates a lack of wet signatures and other wetland indicators (standing water, repeated vegetation stress, etc.) in the location of these ditches, suggesting these areas were uplands prior to construction. Additionally, the Wisconsin Surface Water Data Viewer shows no mapped wetlands within the footprint of all mentioned resources and aerial photos shows no relatively permanent flow and they do not drain other waters. Based on this information, Wetland 1(B) and Wetlands 1-6 are not jurisdictional under the 2023 Revised Definition of “Waters of the United States”: confirming 88 FR 61964 Final Rule.

⁸ 88 FR 3004 (January 18, 2023)

MVP

SUBJECT: 2023 Rule, as amended, Approved Jurisdictional Determination in Light of *Sackett v. EPA*, 143 S. Ct. 1322 (2023), MVP-2023-00845-JLK

The aquatic resource labeled as Pond is a man-made feature created by excavating dry land to collect and retain water in the southeastern portion of Parcels VW-W180-3 and VW-W180-4. The Pond is surrounded by uplands associated with the existing residential development to the west. Review of historical aerial photos shows the Pond was constructed sometime before 2000 along with the residential development to west. Further review of historical aerial photos demonstrates a lack of wet signatures and other wetland indicators (standing water, repeated vegetation stress, etc.) in the location of the Pond, suggesting this area was uplands prior to construction. Additionally, the Wisconsin Surface Water Data Viewer shows no mapped wetlands within the Pond's footprint. Based on this information, the Pond is not jurisdictional under the 2023 Revised Definition of "Waters of the United States": confirming 88 FR 61964 Final Rule.

- b. Describe aquatic resources and features within the review area that were determined to be non-jurisdictional because they do not meet one or more categories of waters of the United States under the 2023 Rule as amended (e.g., tributaries that are non-relatively permanent waters; non-tidal wetlands that do not have a continuous surface connection to a jurisdictional water).

Wetland 2(B) is not a TNW, territorial sea, or interstate water and therefore is not an (a)(1) water. Topographic maps, Google Earth Pro aerial imagery, and site photos provided in the delineation report, indicate this wetland is a depressional wetland located in the north/central portion of Parcels VW-W180-1 and VW-W180-2. Wetland 2(B) is surrounded by uplands involving an agricultural field to the north and residential development to the north. This wetland does meet Wetland 3, a ditch extending to the east. Further review of Lidar data and aerial photos via Google Earth Pro indicates Wetland 3 (evaluated in Section 8(a) above) continues approximately 120 feet to the east where it then branches off to the north and southeast. The branch to the north continues northward into Wetland 2 (evaluated in Section 8(a) above) while the branch to the southeast extends approximately 50 feet before transitioning to uplands involving the agricultural field. Wetland 2(B) does not physically abut a relatively permanent paragraph (a)(2) impoundment or a jurisdictional (a)(3) tributary. Therefore, Wetland 2(B) is not jurisdictional under the 2023 Revised Definition of "Waters of the United States": Confirming" 88 FR 61964 Final Rule.

9. DATA SOURCES. List sources of data/information used in making determination. Include titles and dates of sources used and ensure that information referenced is available in the administrative record.

- a. Office evaluation conducted on April 7, 2025.

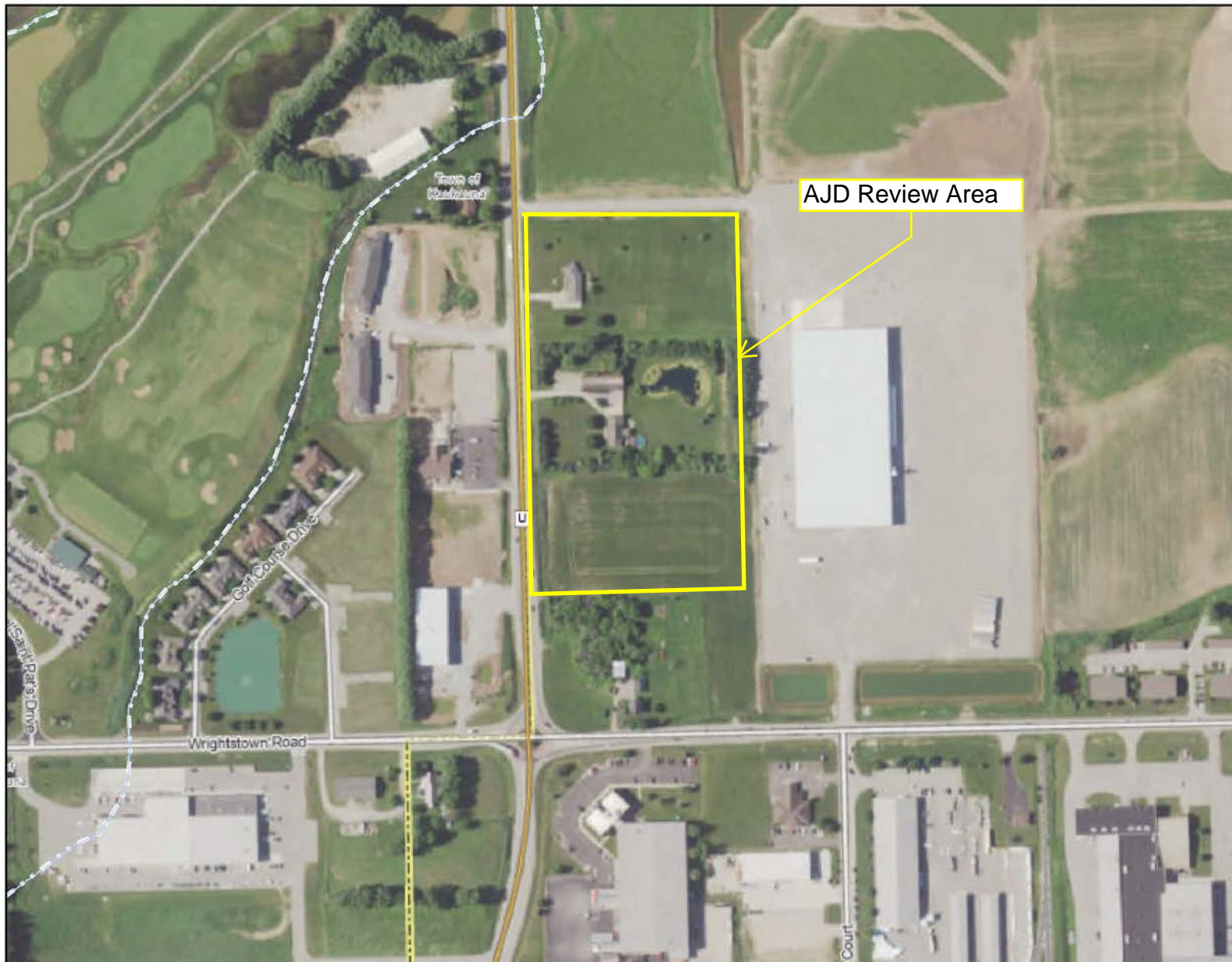
MVP

SUBJECT: 2023 Rule, as amended, Approved Jurisdictional Determination in Light of *Sackett v. EPA*, 143 S. Ct. 1322 (2023), MVP-2023-00845-JLK

- b. Parcels VW-W180-1 and VW-W180-2, Village of Wrightstown Wetland Delineation Report provided by Bay Environmental Strategies, Inc. dated July 5, 2023, and Parcels VW-W180-3 and VW-W180-4, Village of Wrightstown Wetland Delineation Report provided by Bay Environmental Strategies, Inc. dated May 29, 2024.
- c. National Regulatory Viewer-Lidar Data and Google Earth Pro assessed April 7, 2025.
- d. Memorandum To The Field Between The U.S. Department Of The Army, U.S. Army Corps Of Engineers And The U.S. Environmental Protection Agency Concerning The Proper Implementation Of 'Continuous Surface Connection' Under The Definition Of "Waters Of The United States" Under The Clean Water Act" (March 12, 2025).

10. OTHER SUPPORTING INFORMATION. NA

11. NOTE: The structure and format of this MFR were developed in coordination with the EPA and Department of the Army. The MFR's structure and format may be subject to future modification or may be rescinded as needed to implement additional guidance from the agencies; however, the approved jurisdictional determination described herein is a final agency action.



Legend: (some map layers may not be displayed)

- Rivers and Streams
- - - Intermittent Streams
- 24K Intermittent Streams
- 24K Streams and Rivers
- City or Village
- County Boundaries
- County and Local Roads
- County HWY
- Local Road
- Railroads
- Latest Leaf On Imagery

Notes:



Map: 0 350 700 Feet
0 100 200 Meters

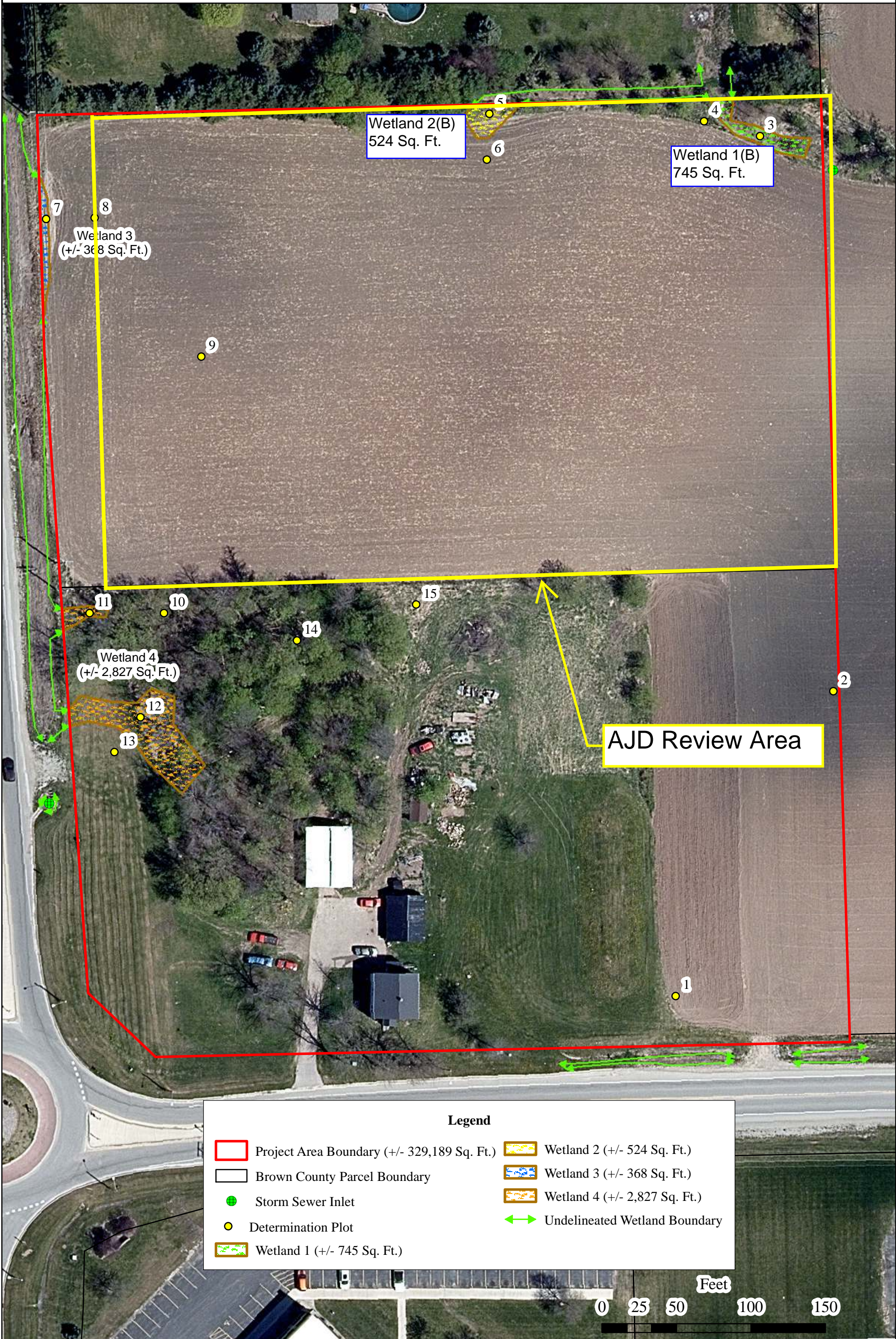
Service Layer Credits:
Latest Leaf On: , Cities, Roads & Boundaries: , Surface Water (Cached): WiDNR, USGS, and other data

Map projection: NAD 1983 HARN Wisconsin TM

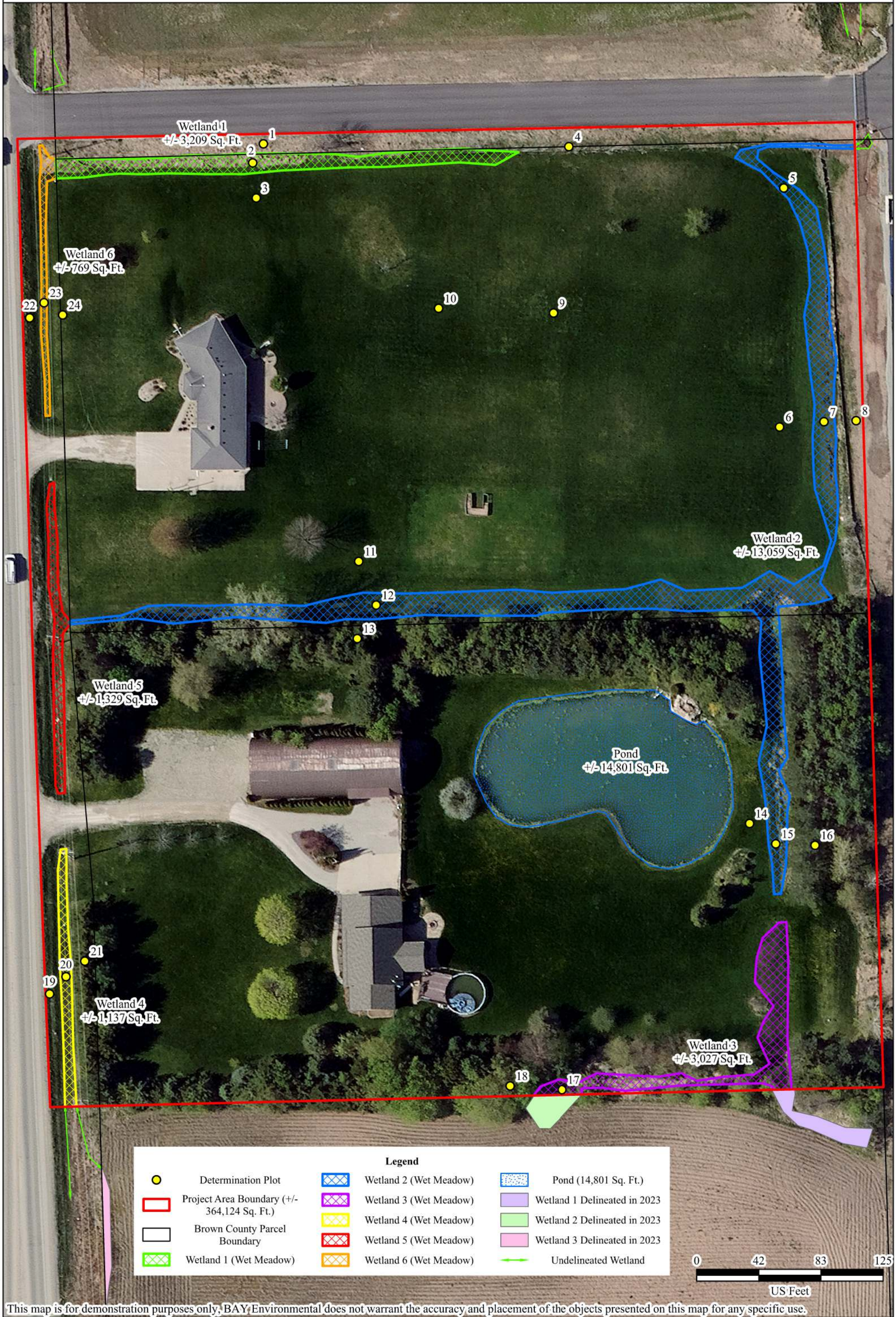
This map is a product generated by a DNR web mapping application.

This map is for informational purposes only and may not have been prepared for or be suitable for legal, engineering, or surveying purposes. The user is solely responsible for verifying the accuracy of information before using for any purpose. By using this product for any purpose user agrees to be bound by all disclaimers found here: <https://dnr.wisconsin.gov/legal>

Date Printed: 4/7/2025 9:30 AM



This map is for demonstration purposes only, BAY Environmental does not warrant the accuracy and placement of the boundary line presented on this map for any specific use.



This map is for demonstration purposes only. BAY Environmental does not warrant the accuracy and placement of the objects presented on this map for any specific use.

